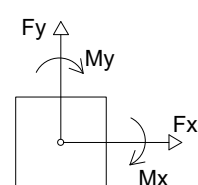
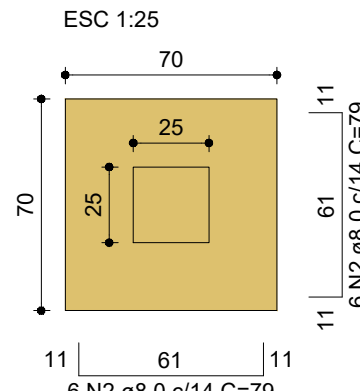


Planta de locação  
escala 1:50

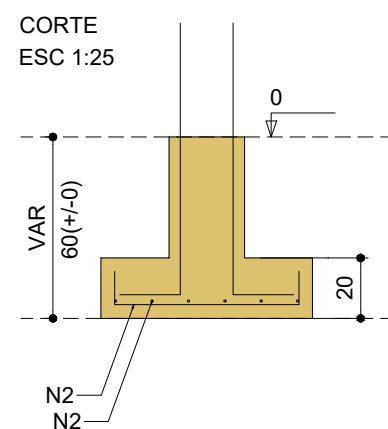
		Pilar		Carga Máx. (tf)	Carga Mín. (tf)	Fundação				
Nome	Seção (cm)	X (cm)	Y (cm)			Lado B (cm)	Lado H (cm)	h0 / ha (cm)	h1 / hb (cm)	df (cm)
P1	25x25	0.00	680.00	7.6	3.8	80	80	20	20	60
P2	25x25	327.50	680.00	5.8	5.8	70	70	20	20	60
P3	25x25	662.50	680.00	5.8	5.7	70	70	20	20	60
P4	25x25	997.50	680.00	5.8	5.7	70	70	20	20	60
P5	25x25	1317.50	680.00	5.8	5.7	70	70	20	20	60
P6	25x25	1652.50	680.00	5.9	5.8	70	70	20	20	60
P7	25x25	1992.50	680.00	9.5	6.7	90	90	20	30	60
P8	25x25	2325.00	680.00	6.8	6.4	80	80	20	20	60
P9	25x25	2645.00	680.00	7.6	6.9	80	80	20	20	60
P10	25x25	2975.00	680.00	6.2	5.1	80	80	20	20	60
P11	25x25	0.00	339.50	5.9	5.8	80	80	20	20	60
P12	14x25	2579.50	339.50	3.9	2.9	70	70	20	20	60
P13	14x25	2754.50	339.50	4.0	2.6	70	70	20	20	60
P14	25x25	2975.00	323.99	6.8	6.5	80	80	20	20	60
P15	14x25	1992.50	226.99	4.5	1.9	70	70	20	20	60
P16	14x25	2179.50	226.99	5.6	5.0	70	70	20	20	60
P17	15x25	2444.50	226.99	3.4	3.1	70	70	20	20	60
P18	15x25	2760.00	226.99	2.4	2.3	70	70	20	20	60
P19	25x25	0.00	0.00	7.5	3.8	80	80	20	20	60
P20	25x25	327.50	0.00	5.9	5.8	70	70	20	20	60
P21	25x25	662.50	0.00	5.8	5.7	70	70	20	20	60
P22	25x25	997.50	0.00	5.8	5.7	70	70	20	20	60
P23	25x25	1317.50	0.00	5.8	5.7	70	70	20	20	60
P24	25x25	1652.50	0.00	6.0	5.8	70	70	20	20	60
P25	25x25	1992.50	0.00	9.6	4.1	90	90	20	30	60
P26	25x25	2325.00	0.00	7.5	6.5	80	80	20	20	60
P27	25x25	2645.00	0.00	6.8	6.0	80	80	20	20	60
P28	25x25	2975.00	0.00	6.6	5.2	80	80	20	20	60



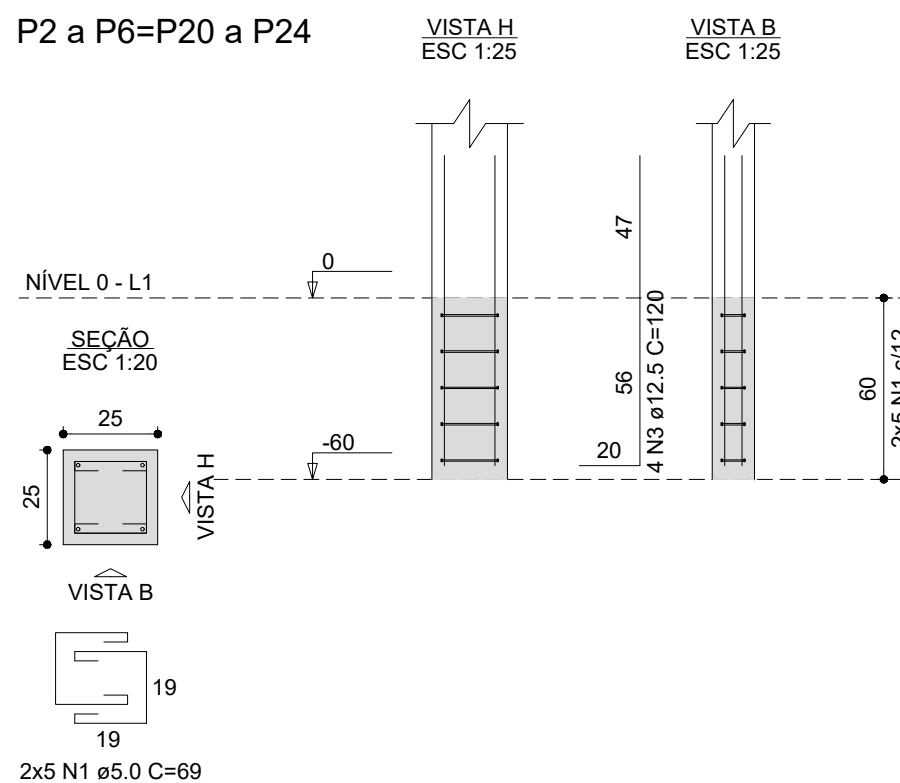
S2 a S6=S20 a S24  
PLANTA  
ESC 1:25



Solo com capacidade de suporte > 1.50 kgf/cm²  
Solo compactado sobre a sapata  
peso específico > 1600.00 kgf/m³



P2 a P6=P20 a P24



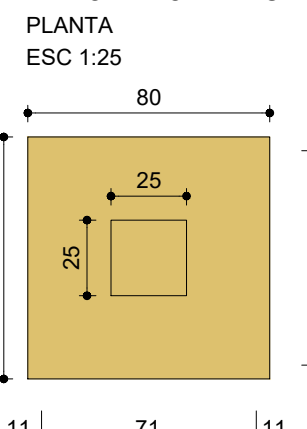
RELAÇÃO DO AÇO				
AÇO	N	DIAM (mm)	QUANT	C.UNIT (cm)
CA60	1	5.0	100	69
CA50	2	8.0	120	79
CA50	3	12.5	40	120

RESUMO DO AÇO				
AÇO	DIAM (mm)	C.TOTAL (m)	PESO + 10% (kg)	
CA50	8.0	94.8	41.2	
CA50	12.5	48.0	50.8	
CA50	5.0	69.0	11.7	

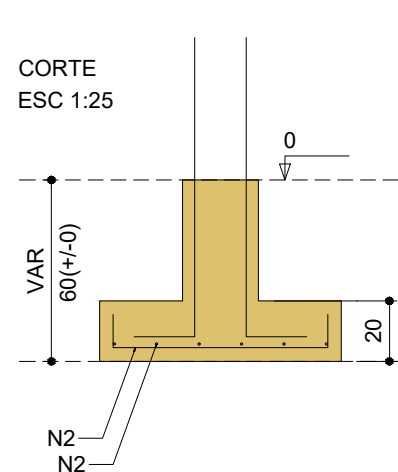
Peso total (kg)  
CA50 92.0  
CA60 11.7

Volume de concreto (C-25) = 1.04 m³  
Área de forma = 6.60 m²

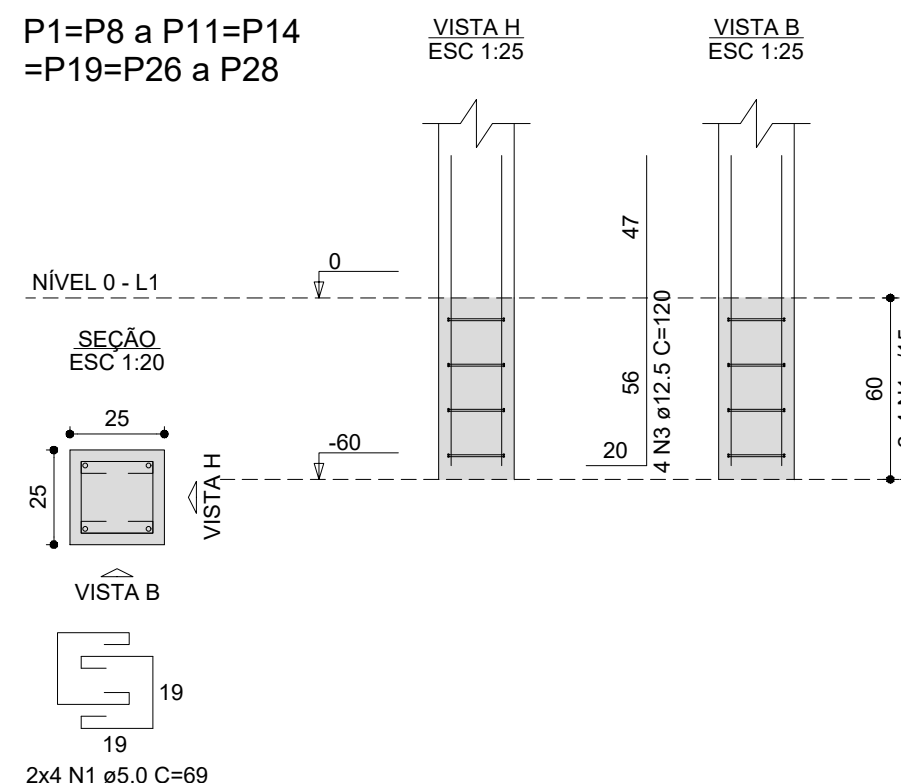
S1=S8 a S11=S14  
=S19=S26 a S28  
PLANTA  
ESC 1:25



Solo com capacidade de suporte > 1.50 kgf/cm²  
Solo compactado sobre a sapata  
peso específico > 1600.00 kgf/m³



P1=P8 a P11=P14  
=P19=P26 a P28



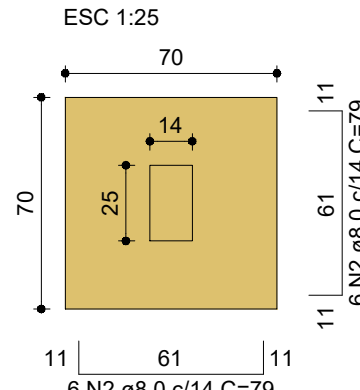
RELAÇÃO DO AÇO				
AÇO	N	DIAM (mm)	QUANT	C.UNIT (cm)
CA50	1	5.0	80	69
CA50	2	8.0	120	89
CA50	3	12.5	40	120

RESUMO DO AÇO				
AÇO	DIAM (mm)	C.TOTAL (m)	PESO + 10% (kg)	
CA50	8.0	106.8	46.4	
CA50	12.5	48.0	50.8	
CA50	5.0	55.2	9.4	

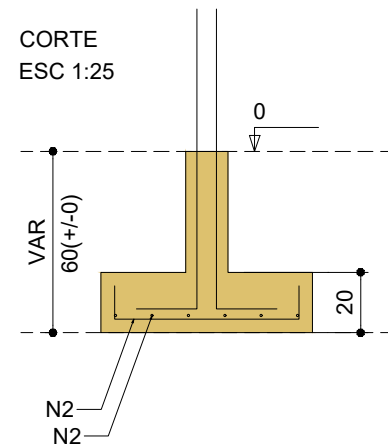
Peso total (kg)  
CA50 97.2  
CA60 9.4

Volume de concreto (C-25) = 1.35 m³  
Área de forma = 7.40 m²

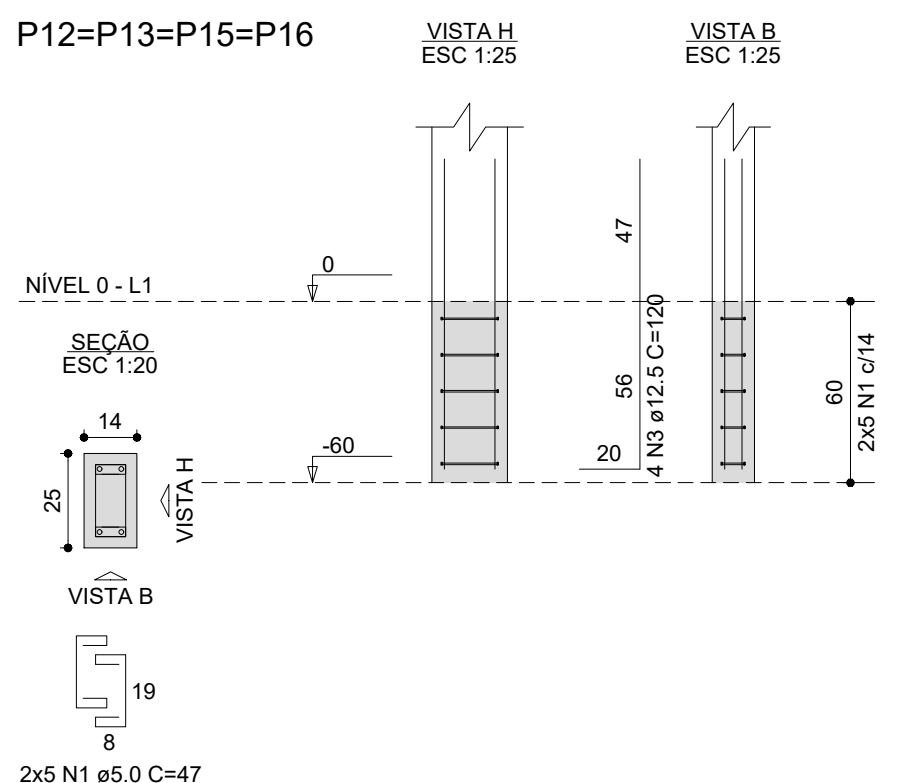
S12=S13=S15=S16  
PLANTA  
ESC 1:25



Solo com capacidade de suporte > 1.50 kgf/cm²  
Solo compactado sobre a sapata  
peso específico > 1600.00 kgf/m³



P12=P13=P15=P16



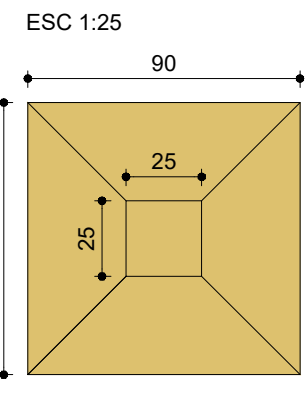
RELAÇÃO DO AÇO				
AÇO	N	DIAM (mm)	QUANT	C.UNIT (cm)
CA60	1	5.0	40	47
CA50	2	8.0	48	79
CA50	3	12.5	16	120

RESUMO DO AÇO				
AÇO	DIAM (mm)	C.TOTAL (m)	PESO + 10% (kg)	
CA50	8.0	37.9	16.5	
CA50	12.5	19.2	20.3	
CA60	5.0	18.8	3.2	

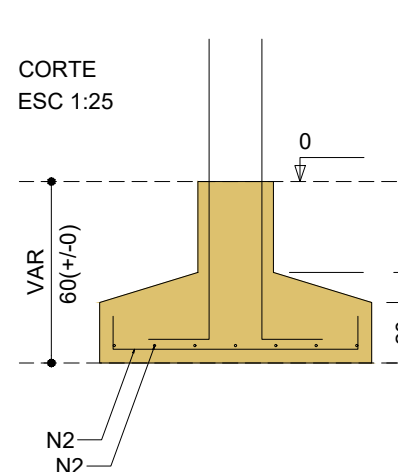
Peso total (kg)  
CA50 36.8  
CA60 3.2

Volume de concreto (C-25) = 0.40 m³  
Área de forma = 2.56 m²

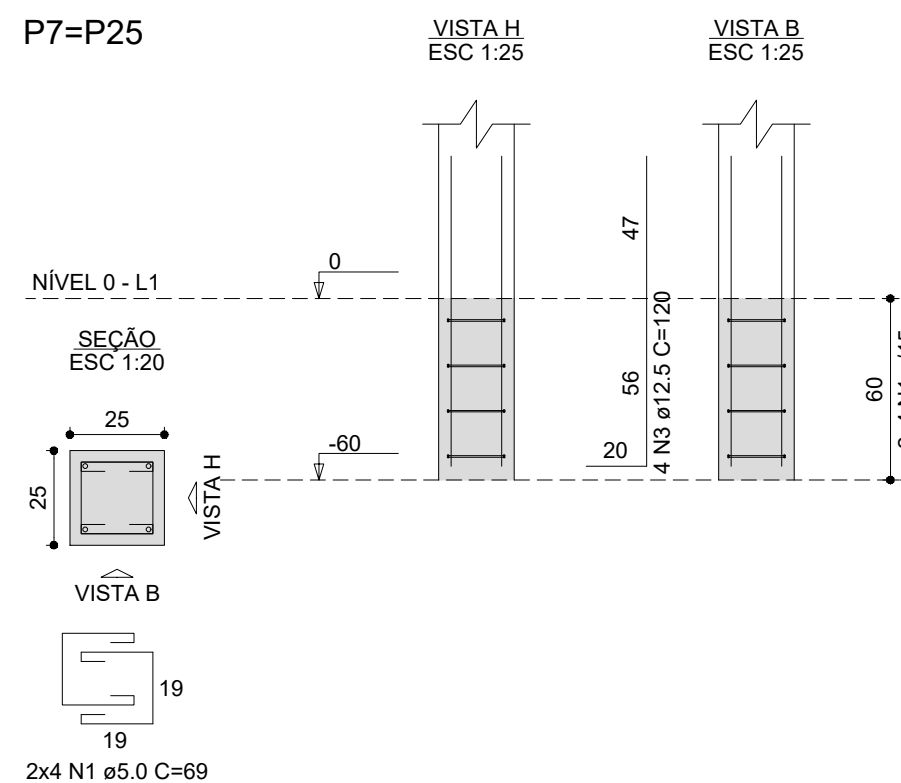
S7=S25  
PLANTA  
ESC 1:25



Solo com capacidade de suporte > 1.50 kgf/cm²  
Solo compactado sobre a sapata  
peso específico > 1600.00 kgf/m³



P7=P25



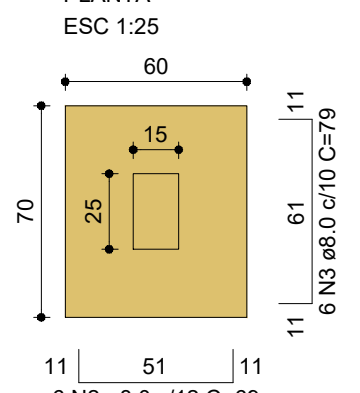
RELAÇÃO DO AÇO				
AÇO	N	DIAM (mm)	QUANT	C.UNIT (cm)
CA60	1	5.0	16	69
CA50	2	8.0	28	99
CA50	3	12.5	8	120

RESUMO DO AÇO				
AÇO	DIAM (mm)	C.TOTAL (m)	PESO + 10% (kg)	
CA50	8.0	27.7	12.0	
CA50	12.5	9.6	10.2	
CA50	5.0	11.0	1.9	

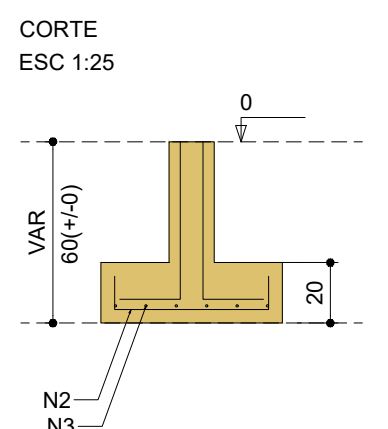
Peso total (kg)  
CA50 22.2  
CA60 1.9

Volume de concreto (C-25) = 0.44 m³  
Área de forma = 3.24 m²

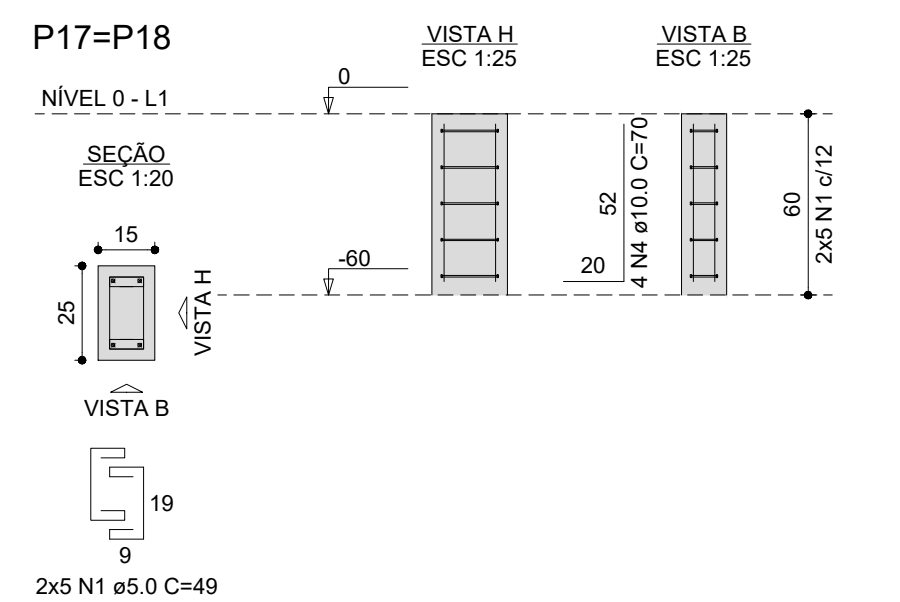
S17=S18  
PLANTA  
ESC 1:25



Solo com capacidade de suporte > 1.50 kgf/cm²  
Solo compactado sobre a sapata  
peso específico > 1600.00 kgf/m³



P17=P18



RELAÇÃO DO AÇO				
AÇO	N	DIAM (mm)	QUANT	C.UNIT (cm)
CA60	1	5.0	20	49
CA50	2	8.0	12	89
CA50	3	8.0	12	79

RESUMO DO AÇO				
AÇO	DIAM (mm)	C.TOTAL (m)	PESO + 10% (kg)	
CA50	8.0	17.8	7.7	
CA50	10.0	2.8	1.9	
CA60	5.0	9.8	1.7	

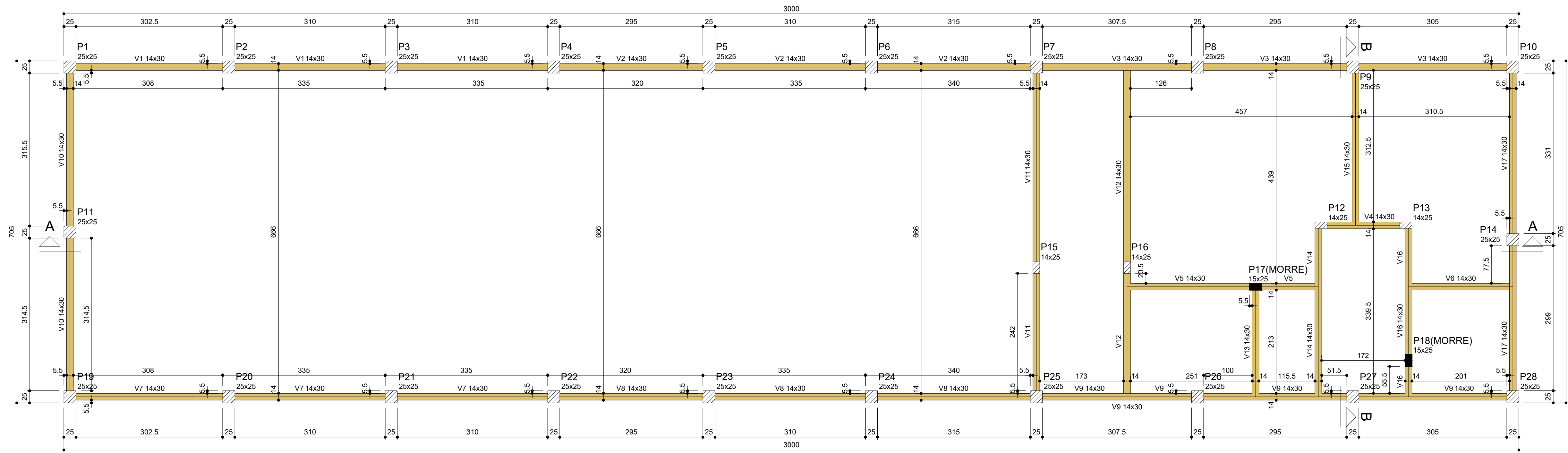
Peso total (kg)  
CA50 9.6  
CA60 1.7

Volume de concreto (C-25) = 0.20 m³  
Área de forma = 1.28 m²



LOCAL:		FASE:		ESCALA:	
PASSO FUNDO - RS		PROJETO EXECUTIVO		1:20; 1:25; 1:50	
OBRA:		REVISÃO Nº:		TAMANHO FOLHA:	
ANEXO II		R00		594 x 1189	
PROJETO:		DATA:		Nº PRANCHA:	
PROJETO ESTRUTURAL / FUNDAÇÕES		22/11/2021		EST 01	
CONTEÚDO:		DESENHADO POR:		06	
PLANTA DE LOCAÇÃO		RODRIGO EMMER			
DETALHAMENTO SAPATAS		NOME DO ARQUIVO:			
ENDEREÇO:		RUA CAPITÃO ARAÚJO, 20, CENTRO			



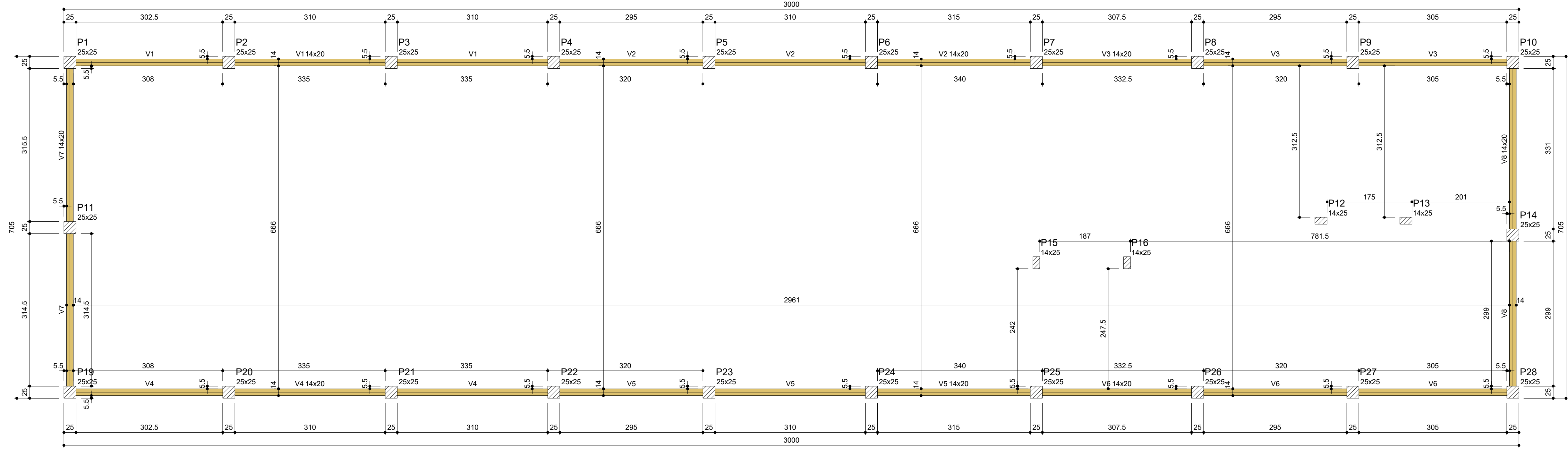


Forma do pavimento Nível 0 (Nível 0)  
escala 1:50

Vigas			
Nome	Seção (cm)	Elevação (cm)	Nível (cm)
V1	14x30	0	0
V2	14x30	0	0
V3	14x30	0	0
V4	14x30	0	0
V5	14x30	0	0
V6	14x30	0	0
V7	14x30	0	0
V8	14x30	0	0
V9	14x30	0	0
V10	14x30	0	0
V11	14x30	0	0
V12	14x30	0	0
V13	14x30	0	0
V14	14x30	0	0
V15	14x30	0	0
V16	14x30	0	0
V17	14x30	0	0

Características dos materiais	
fck (kgf/cm²)	Ecs (kgf/cm³)
250	241500

Legenda das vigas e paredes	
	Viga

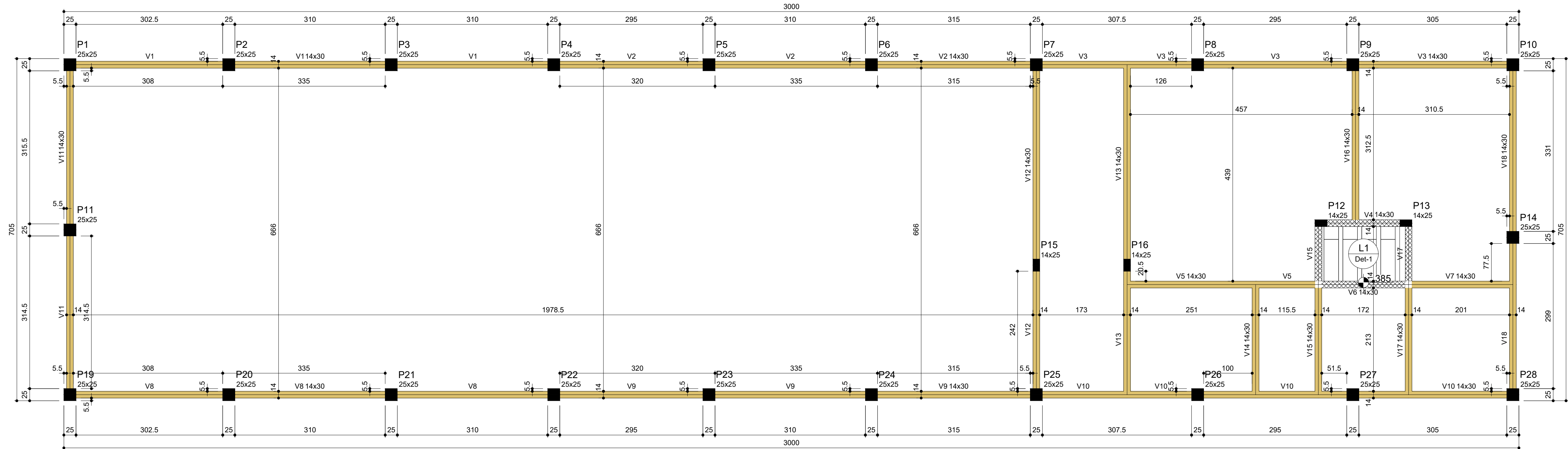


Forma do pavimento Nível 290 (Nível 290)  
escala 1:50

Vigas			
Nome	Seção (cm)	Elevação (cm)	Nível (cm)
V1	14x20	0	290
V2	14x20	0	290
V3	14x20	0	290
V4	14x20	0	290
V5	14x20	0	290
V6	14x20	0	290
V7	14x20	0	290
V8	14x20	0	290

Características dos materiais	
fck (kgf/cm²)	Ecs (kgf/cm³)
250	241500

Legenda das vigas e paredes	
	Viga



Forma do pavimento Nível 385 (Nível 385)  
escala 1:50

Vigas			
Nome	Seção (cm)	Elevação (cm)	Nível (cm)
V1	14x30	0	385
V2	14x30	0	385
V3	14x30	0	385
V4	14x30	0	385
V5	14x30	0	385
V6	14x30	0	385
V7	14x30	0	385
V8	14x30	0	385
V9	14x30	0	385
V10	14x30	0	385
V11	14x30	0	385
V12	14x30	0	385
V13	14x30	0	385
V14	14x30	0	385
V15	14x30	0	385
V16	14x30	0	385
V17	14x30	0	385
V18	14x30	0	385

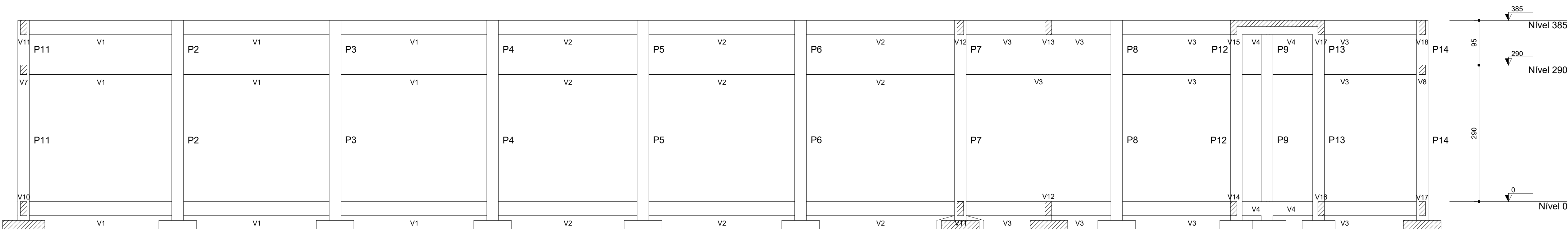
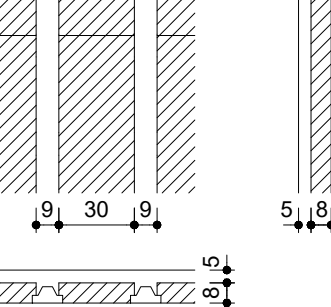
Características dos materiais	
fck (kgf/cm²)	Ecs (kgf/cm³)
250	241500

Legenda das vigas e paredes	
	Viga
	Viga chata ou invertida

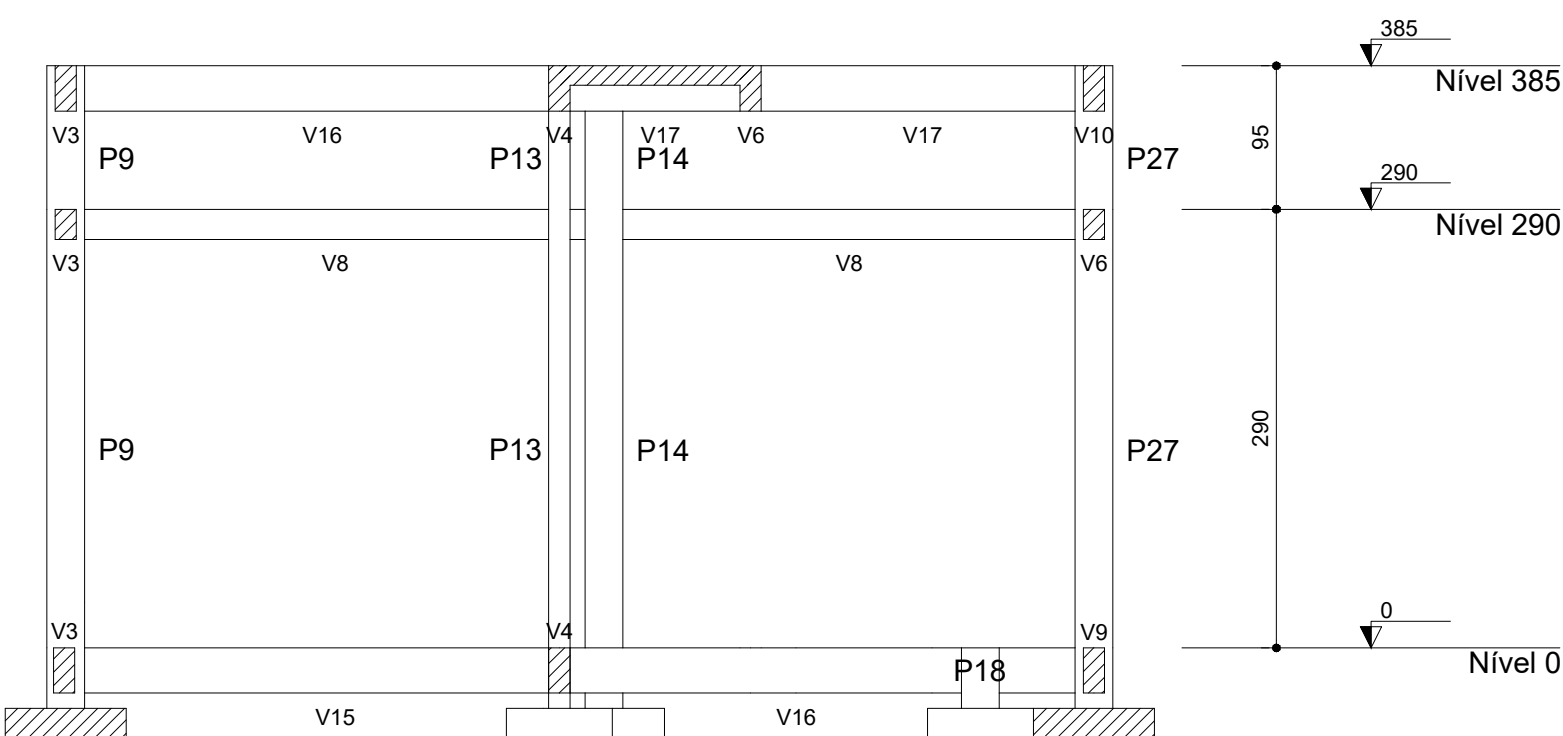
Blocos de enchimento			
Detalhe	Tipo	Nome	Quantidade
1	EPS Unidirecional	B8/30/125	8

Lajes				
Nome	Tipo	Altura (cm)	Elevação (cm)	Sobrecarga (kgf/m²)
L1	Pré-moldada	13	25	360

Detalhe 1 (esc. 1:30)



Corte A-A  
escala 1:50

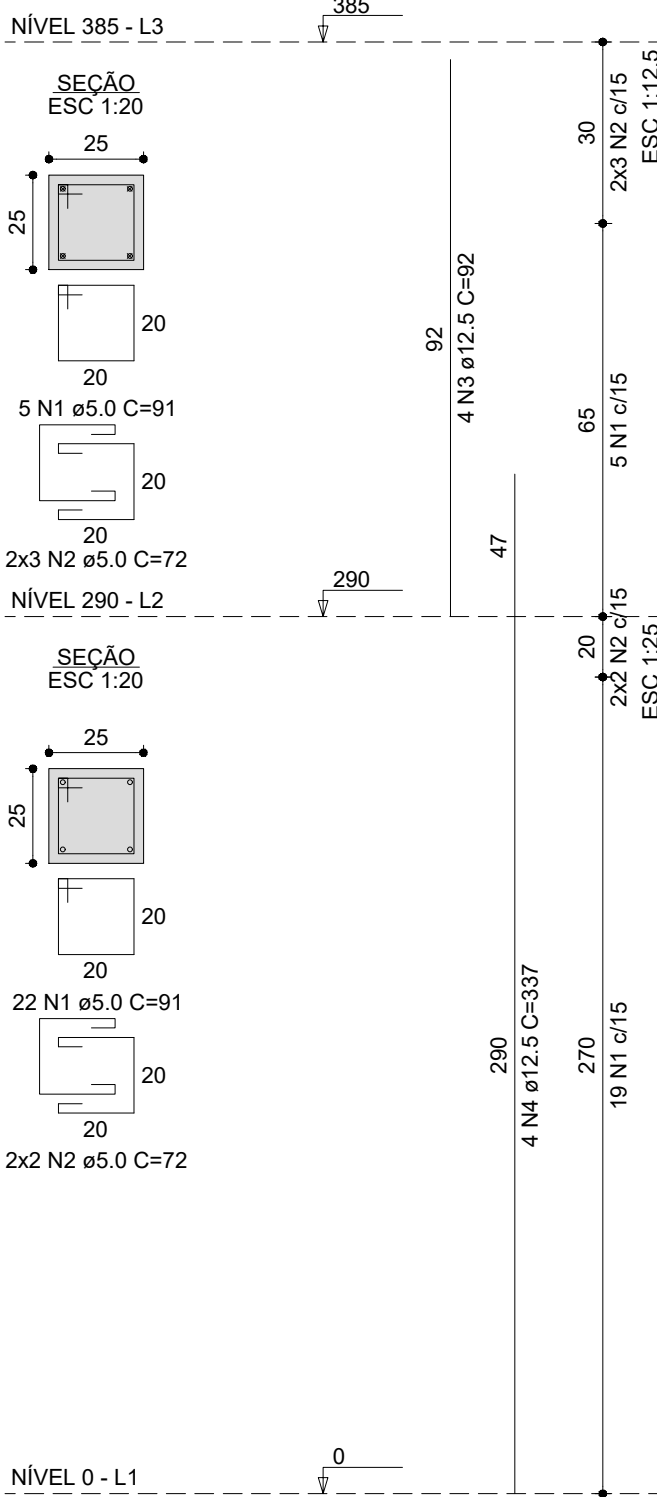


Corte B-B  
escala 1:50



LOCAL: PASSO FUNDO - RS	FASE: PROJETO EXECUTIVO	ESCALA: 1:50
OBRA: ANEJO II	REVISÃO Nº: R00	TAMANHO FOLHA: A0
PROJETO: PROJETO ESTRUTURAL	DATA: 15/12/2021	Nº PRANCHA: 02
CONTEÚDO: PLANTA DE FORMAS PLANTA DE CORTES	DESENHADO POR: RODRIGO EMMER	151
ENDEREÇO: RUA CAPITÃO ARAÚJO, 20, CENTRO	NOME DO ARQUIVO:	06

P1=P2=P3=P4=P5=P6=P7=P8=P9=P10=P11=P14  
P19=P20=P21=P22=P23=P24=P25=P26=P27=P28



RELAÇÃO DO AÇO

P1 a P11, P14, P19 a P28

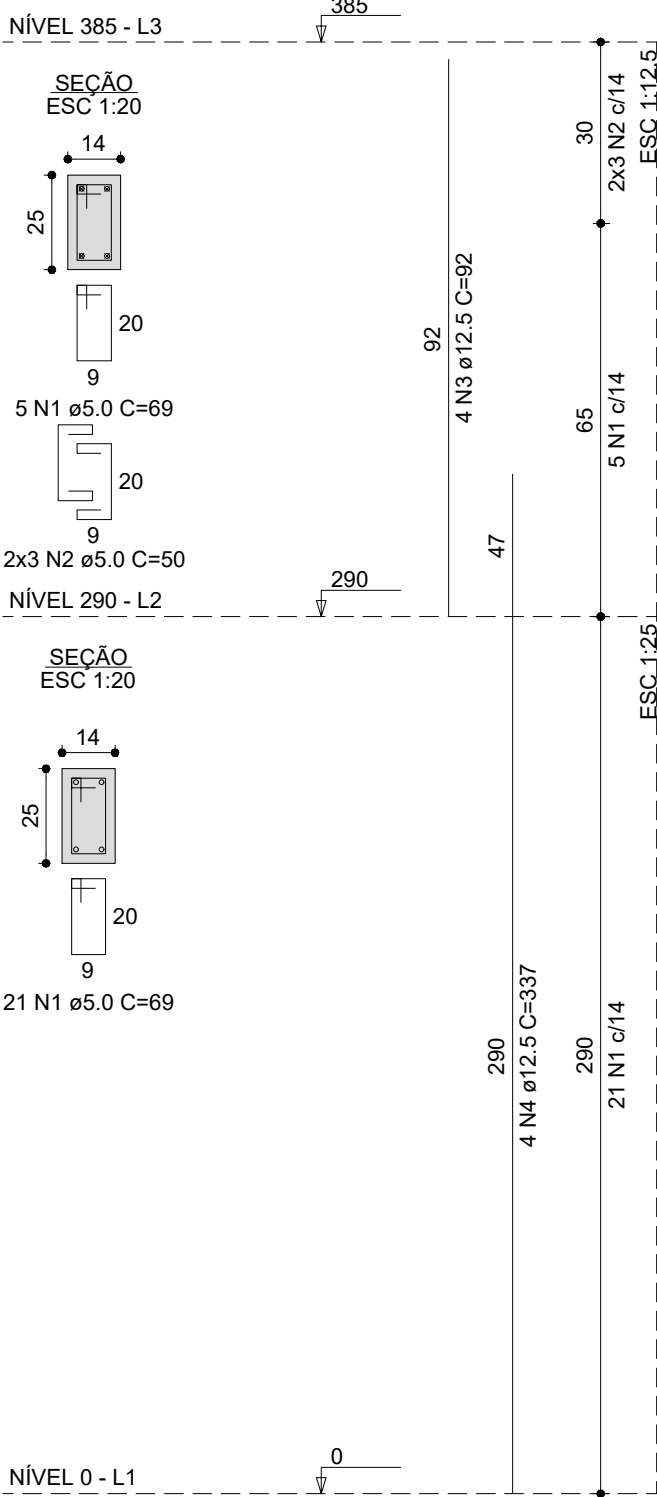
AÇO	N	DIAM (mm)	QUANT	C.UNIT (cm)	C.TOTAL (cm)
CA60	1	5.0	572	91	52052
	2	5.0	220	72	15840
CA50	3	12.5	88	92	8096
	4	12.5	88	337	29656

RESUMO DO AÇO

AÇO	DIAM (mm)	C.TOTAL (m)	PESO + 10% (kg)
CA50	12.5	377.5	399.9
CA60	5.0	678.9	115.0
PESO TOTAL (kg)			
CA50		399.9	
CA60		115.0	

Volume de concreto (C-25) = 4.62 m³  
Área de forma = 73.7 m²

P12=P13=P15=P16



RELAÇÃO DO AÇO

P12 a P16

AÇO	N	DIAM (mm)	QUANT	C.UNIT (cm)	C.TOTAL (cm)
CA60	1	5.0	104	69	7176
	2	5.0	24	50	1200
CA50	3	12.5	16	92	1472
	4	12.5	16	337	5392

RESUMO DO AÇO

AÇO	DIAM (mm)	C.TOTAL (m)	PESO + 10% (kg)
CA50	12.5	68.8	72.8
CA60	5.0	83.6	14.4
PESO TOTAL (kg)			
CA50		72.8	
CA60		14.4	

Volume de concreto (C-25) = 0.48 m³  
Área de forma = 10.44 m²



# UFFS

## UNIVERSIDADE FEDERAL DA FRONTEIRA SUL

Secretaria Especial de Obras-SEO

SECRETARIA ESPECIAL DE OBRAS:  
SECRETÁRIO DE OBRAS: ENG. CIV. RODRIGO EMMER  
DIRETOR DE PROJETOS: ENG. CIV. FÁBIO CORREA GASPARETTO

FISCALIZAÇÃO DE OBRAS:  
CHAPECO/SC: ENG. CIV. FÁBIO ALEX ZENARO  
CERRO LARGO/RS: ENG. ELETRIC. MATHEUS TODESCATT  
ERECIM/RS: ENG. CIV. PAULO ROBERTO HENDGES  
LARANJEIRAS DO SUL/PR: ENG. CIV. CANISIO ROQUE SCHMIDT  
REALIZA/PR: ENG. CIV. JULIANA ANA CHIARELLO  
ENG. CIV. FÁBIO ONETTA  
ENG. CIV. FABRICIO BALESTRIN

DIRETORIA DE PROJETOS - SEO:  
ARQ. URB. ADRIANA FREITAG MIGOTT  
ARQ. URB. WELLINGTON TISCHER  
ENG. ELETRIC. SILVIO ANTONIO TESTON  
ENG. ELETRIC. VICTOR LACERDA DA SILVA  
ENG. SANIT. ADEMIR TANCINI  
ENG. MEC. DANIEL ESPIG  
TEC. MEC. GIOVANI FÁVERO  
TEC. ELETROTEC. DIEGO GNOATTO  
A.T.I. LEANDRO PEREIRA

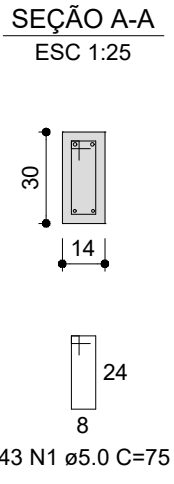
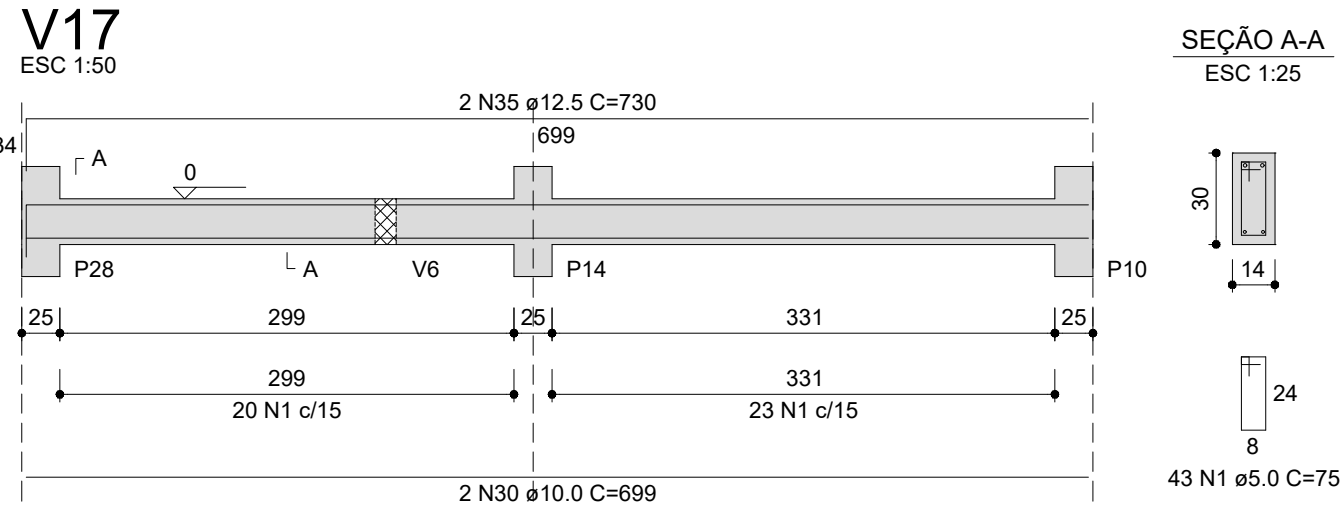
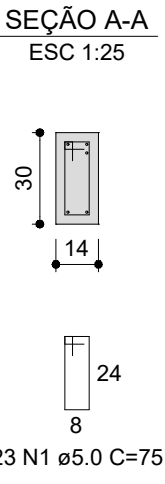
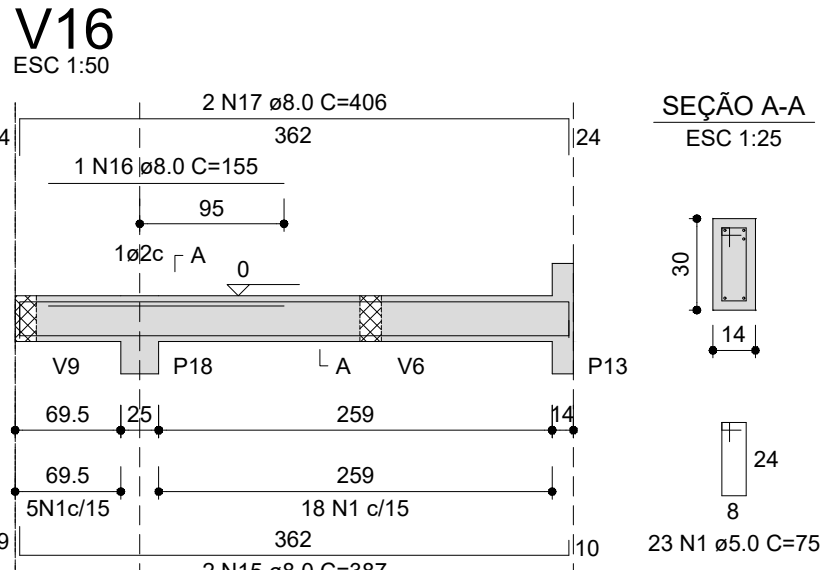
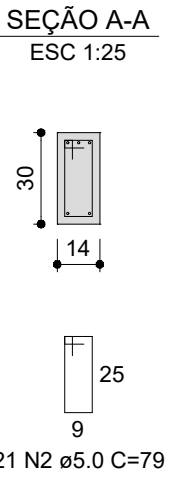
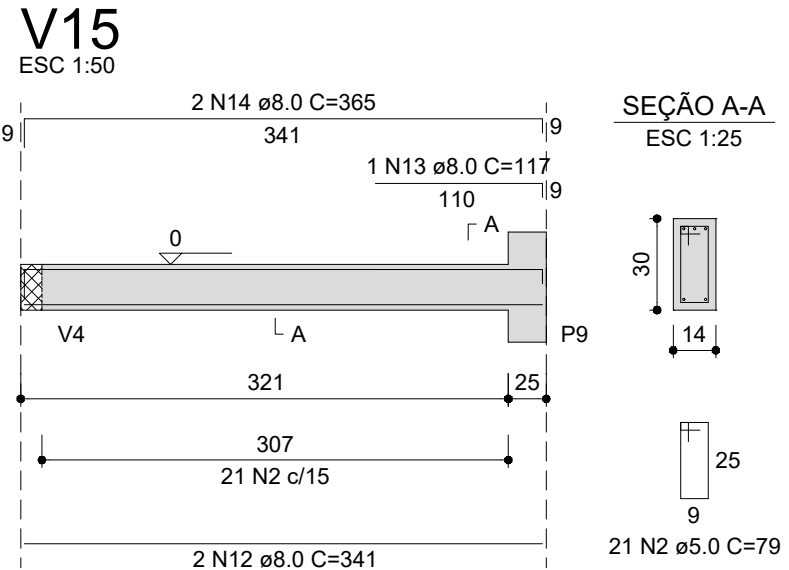
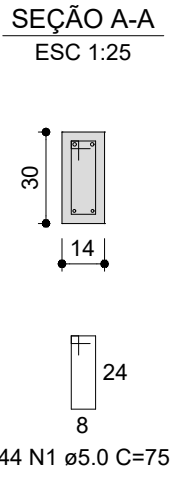
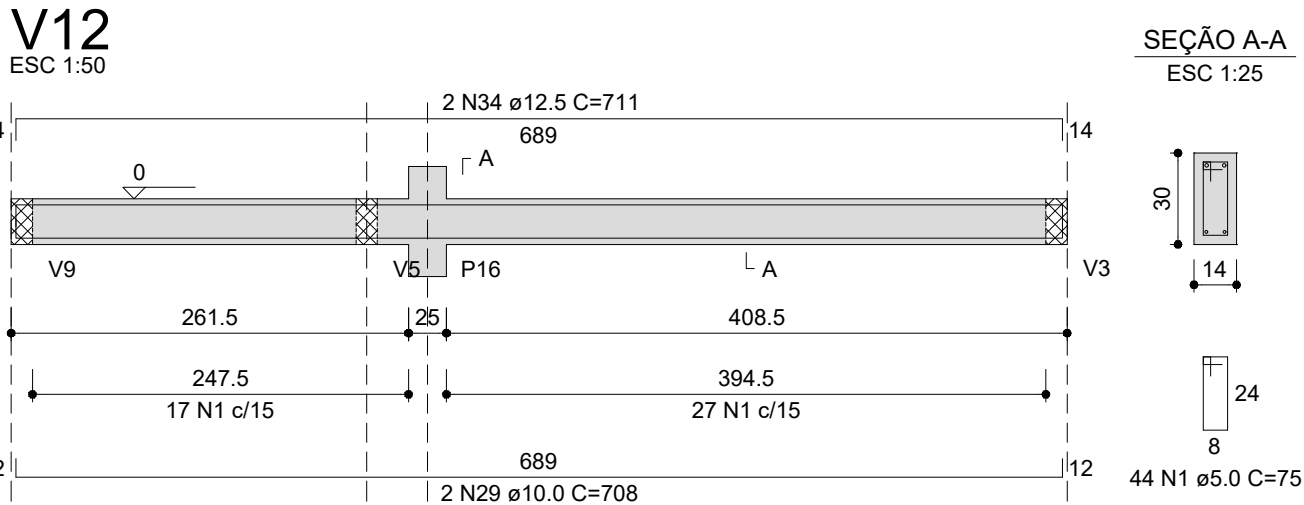
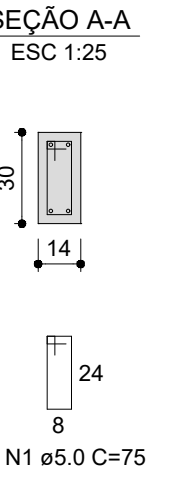
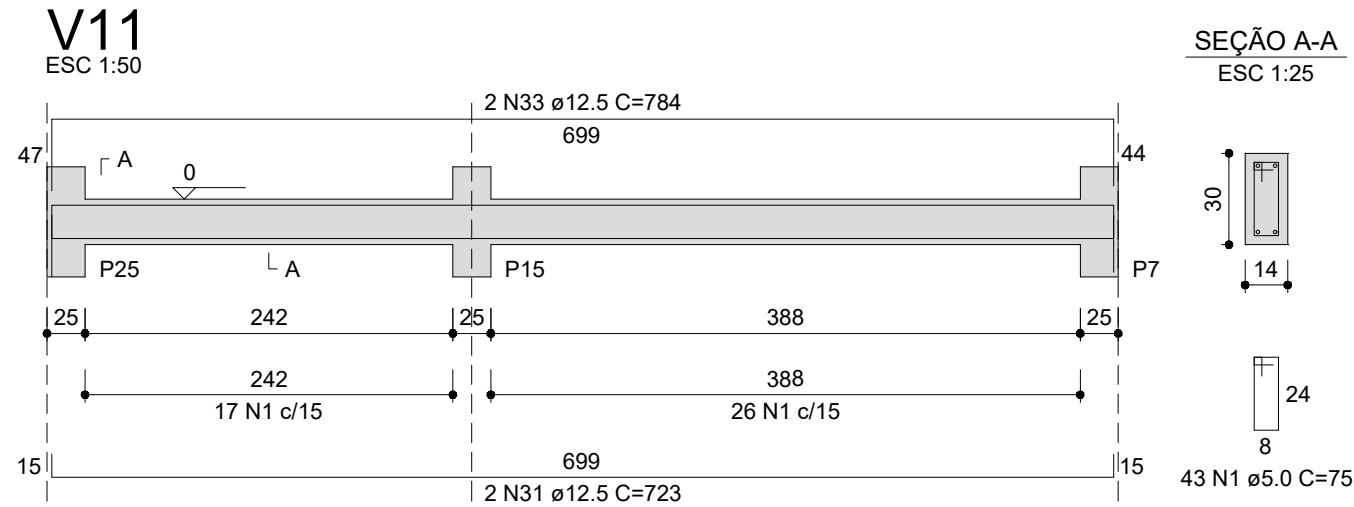
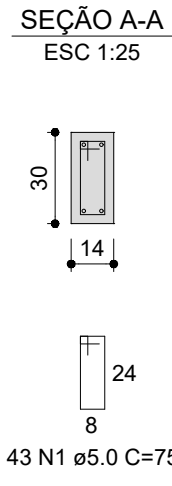
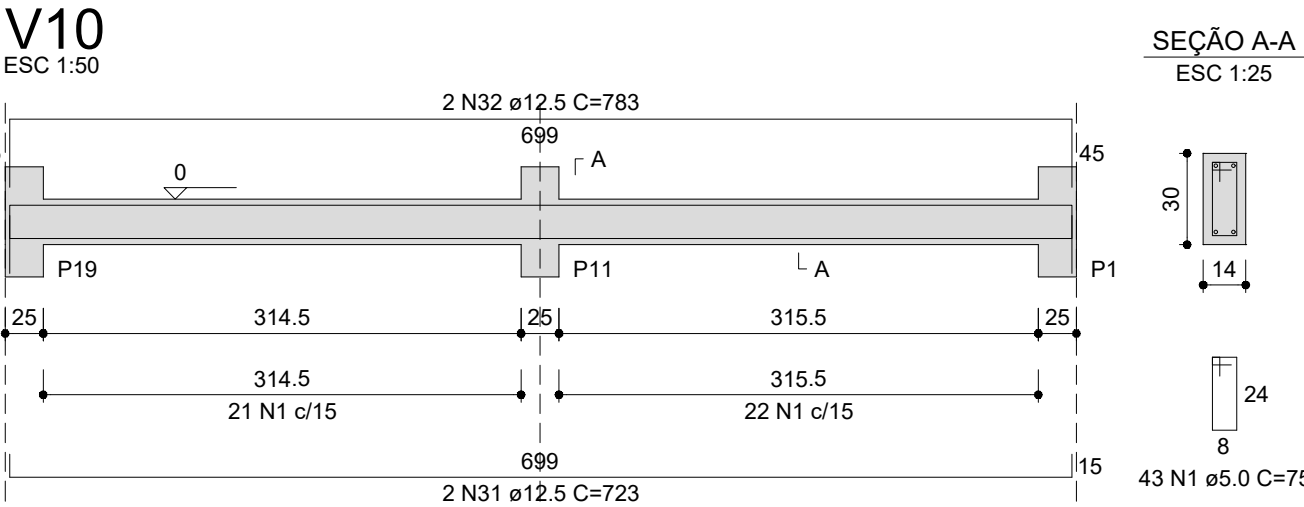
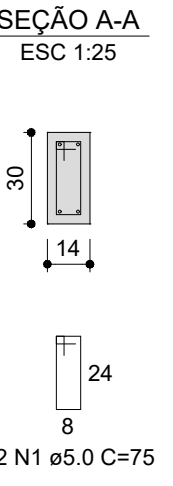
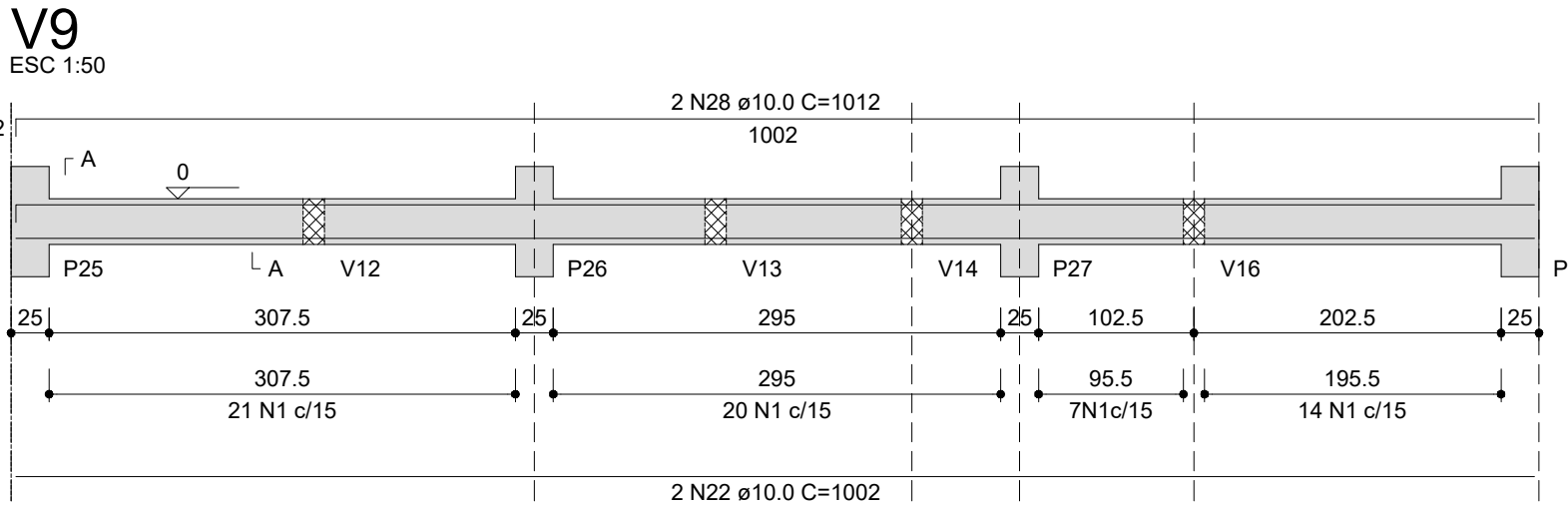
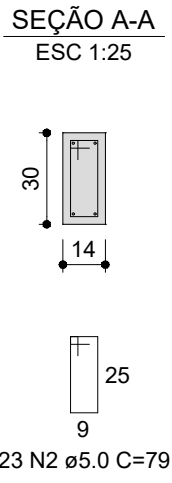
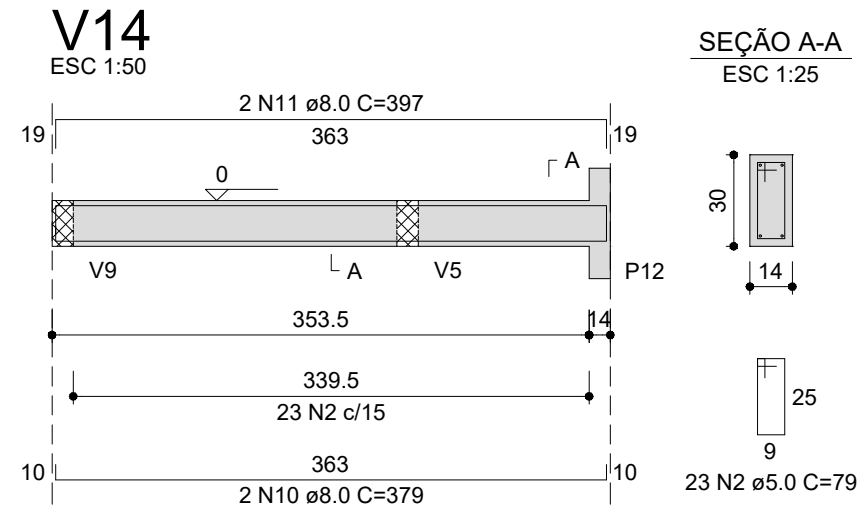
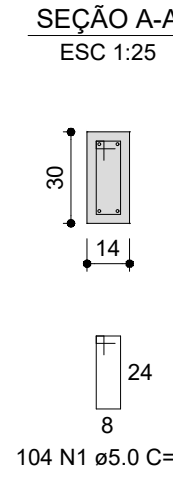
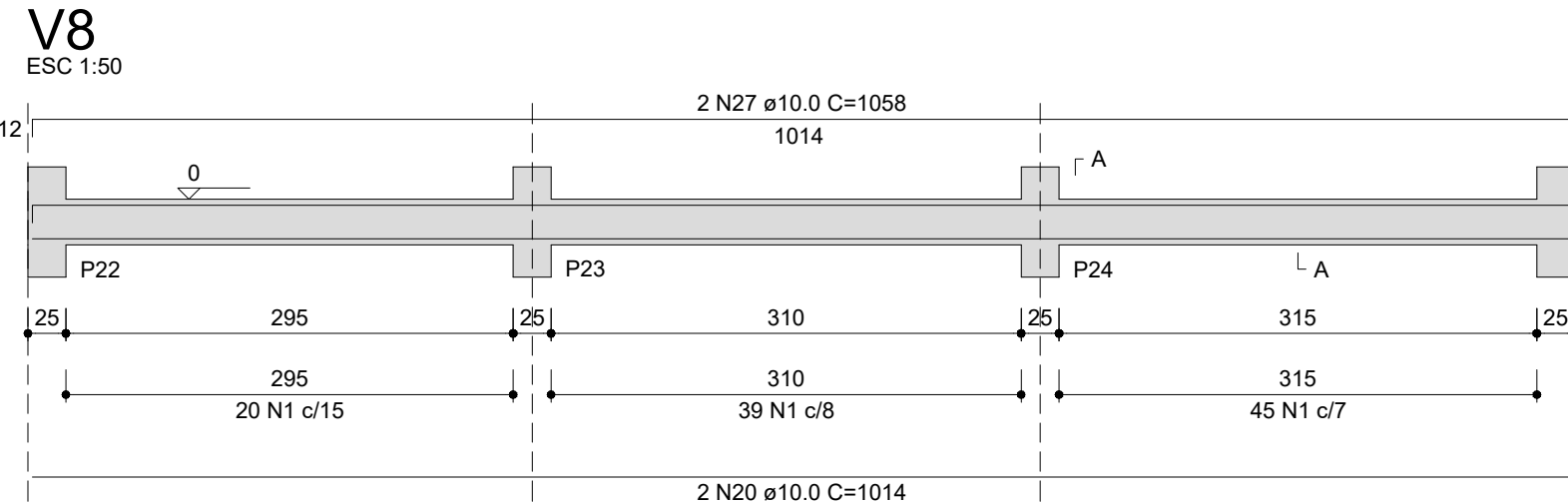
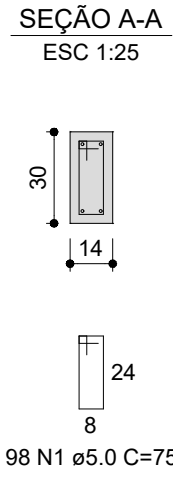
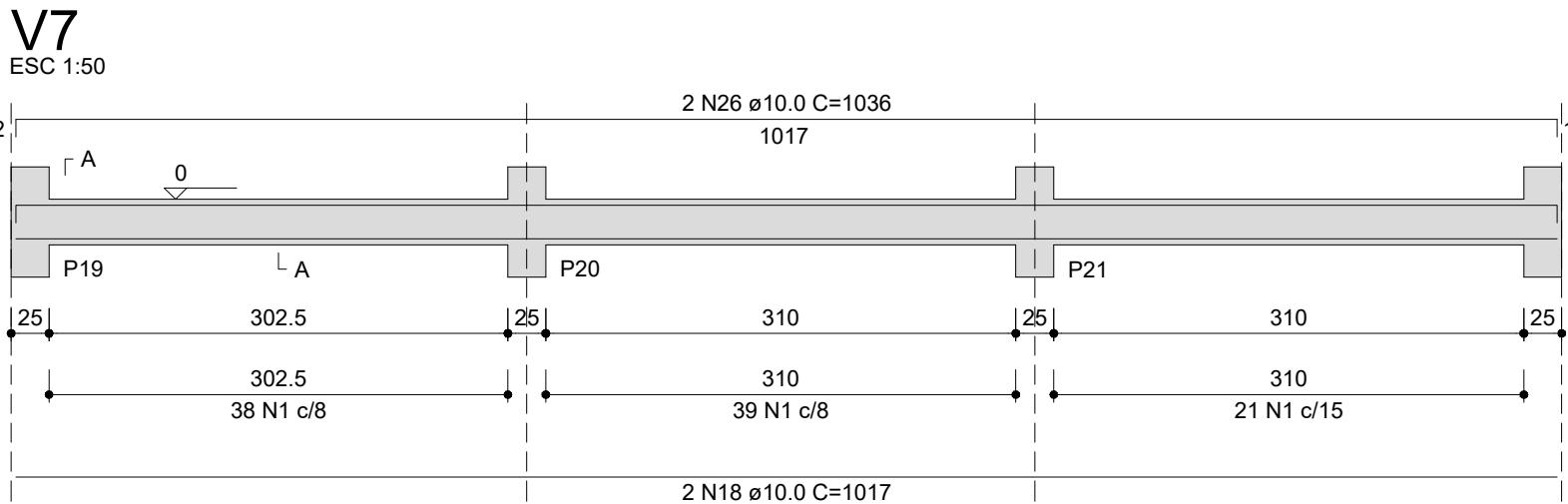
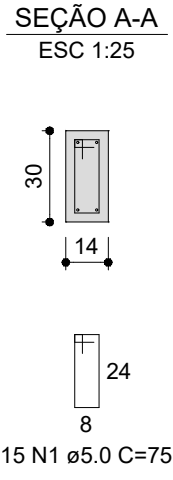
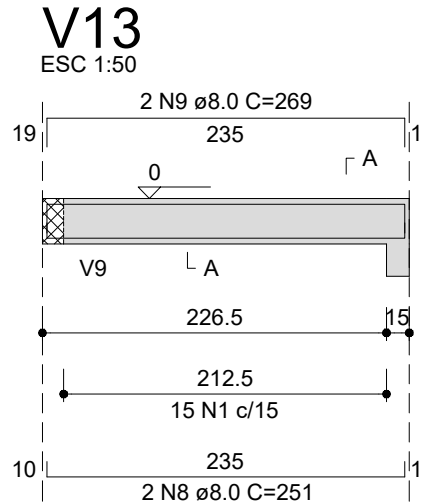
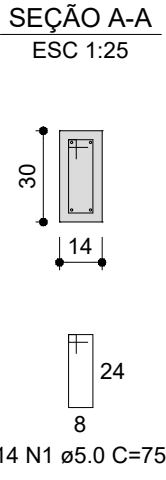
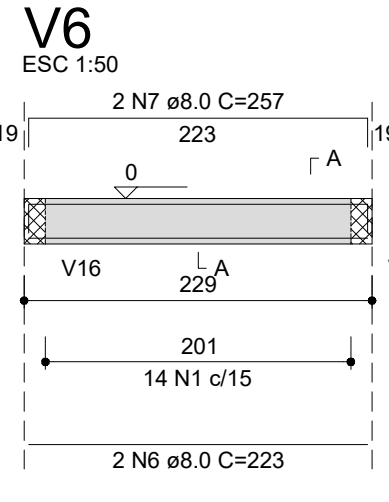
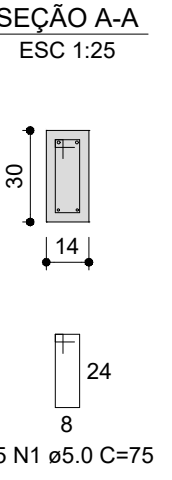
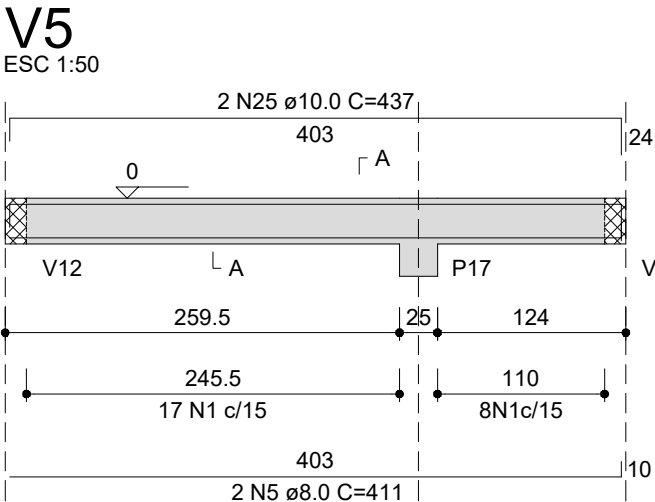
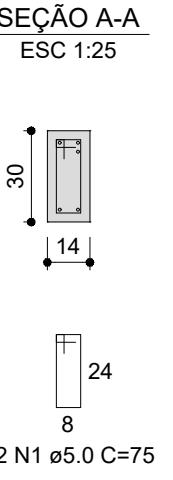
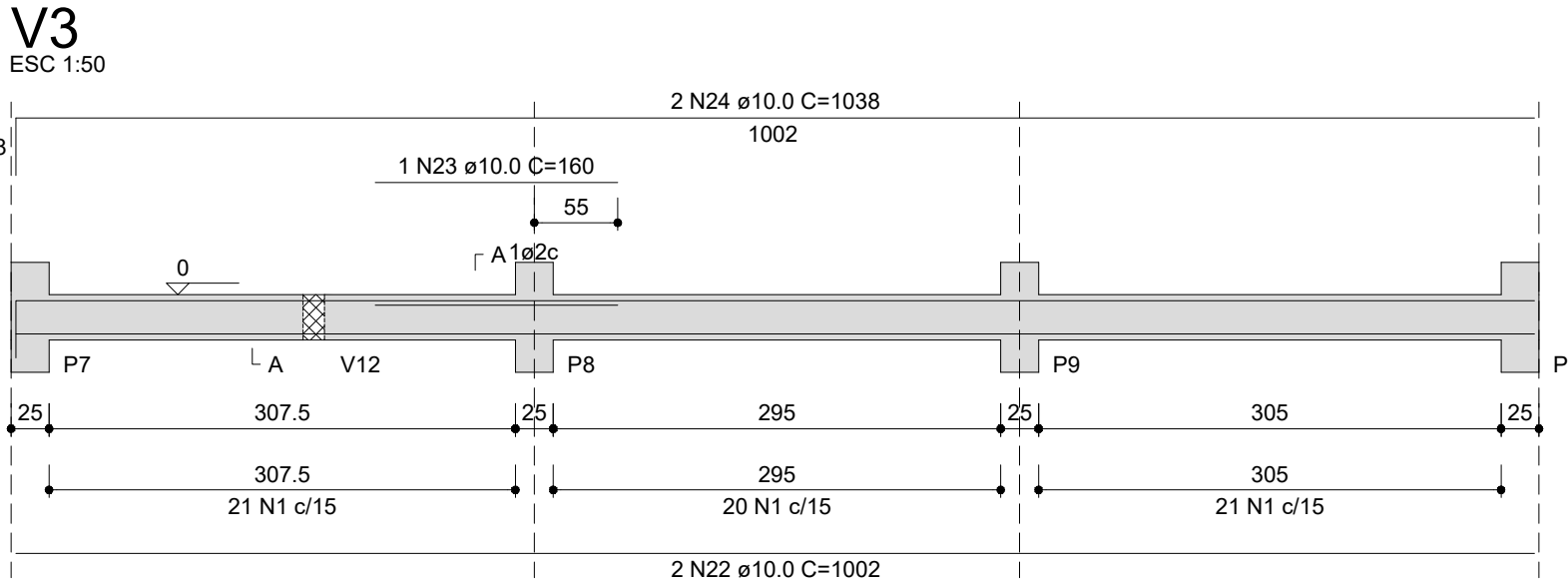
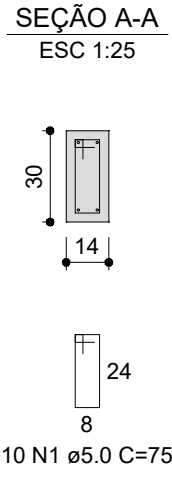
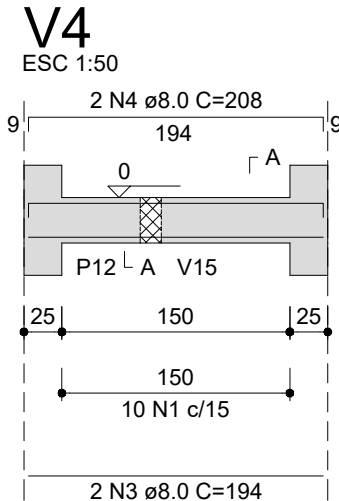
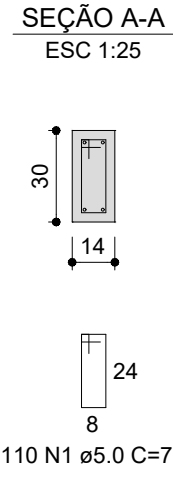
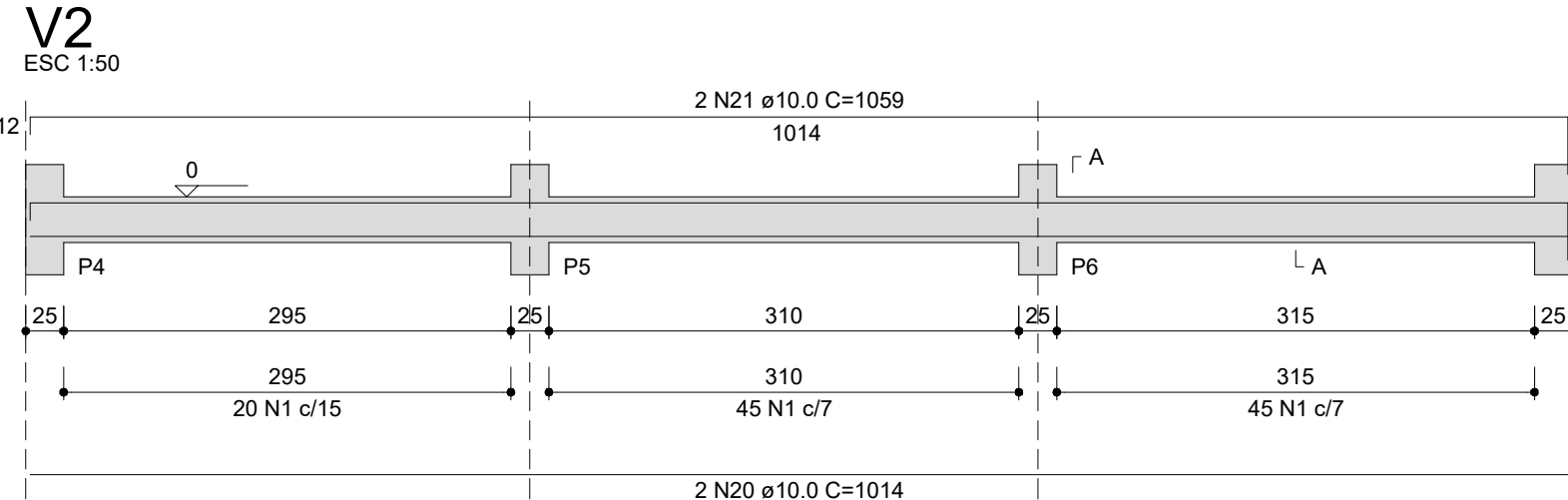
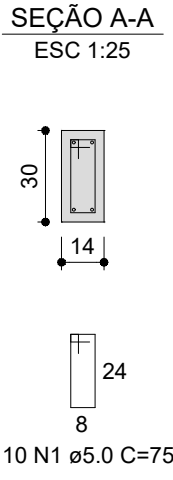
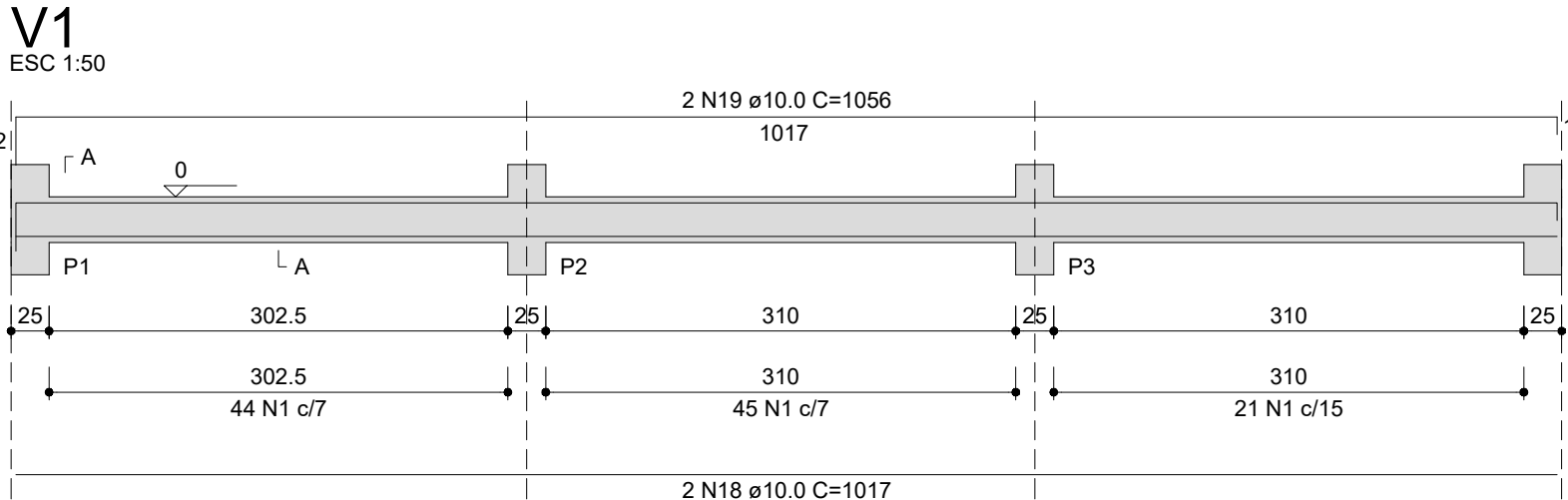
CAU/BR A41125-6  
CAU/BR A50629-9  
CREA/SC 094939-8  
CREA/SC 143788-6  
CREA/SC 113590-2  
CREA/SC 114137-1  
CREA/SC 083527-0  
CREA/SC 119381-4

CREA/SC 109826-8  
CREA/SC 067205-5  
CREA/SC 103121-3  
CREA/SC 111551-1  
CREA/RS 107012  
CREA/RS 43769  
CREA/RS 127586  
CREA/PR 84187-D  
CREA/PR 127466

Avenida Fernando Machado, nº 108 E - Bloco 2 Sala 2.2.05  
Centro, Chapecó, SC - Contatos: (0xx49) 2049-3113 / 2049-3118 - Site Oficial: [www.uffs.edu.br](http://www.uffs.edu.br)

LOCAL: PASSO FUNDO - RS	FASE: PROJETO EXECUTIVO	ESCALA: 1:15; 1:20; 1:25
OBRA: ANEXO II	REVISÃO Nº: R00	TAMANHO FOLHA: 297 x 594
PROJETO: PROJETO ESTRUTURAL	DATA: 22/11/2021	Nº PRANCHA:
CONTEÚDO: DETALHAMENTO PILARES	DESENHADO POR: RODRIGO EMMER	EST 03 / 06
ENDEREÇO: RUA CAPITÃO ARAÚJO, 20, CENTRO	NOME DO ARQUIVO:	

ANEXO+II\_UFFS\_FF\_FE\_EST-PILARES.DWG



RELAÇÃO DO AÇO

AÇO	N	DIAM (mm)	QUANT	C.UNIT (cm)	C.TOTAL (cm)
CA60	1	5.0	806	75	60450
V4	2	5.0	44	79	3476
V5	3	8.0	2	194	388
V7	4	8.0	2	208	416
V10	5	8.0	2	411	822
V13	6	8.0	2	223	446
V16	7	8.0	2	257	514
	8	8.0	2	251	502
	9	8.0	2	269	538
	10	8.0	2	379	758
	11	8.0	2	397	794
	12	8.0	2	341	682
	13	8.0	1	117	117
	14	8.0	2	365	730
	15	8.0	2	387	774
	16	8.0	1	155	155
	17	8.0	2	406	812
	18	10.0	4	1017	4068
	19	10.0	2	1056	2112
	20	10.0	4	1014	4056
	21	10.0	2	1059	2118
	22	10.0	4	1002	4008
	23	10.0	1	160	160
	24	10.0	2	1038	2076
	25	10.0	2	437	874
	26	10.0	2	1036	2072
	27	10.0	2	1058	2116
	28	10.0	2	1012	2024
	29	10.0	2	708	1416
	30	10.0	2	699	1398
	31	12.5	4	723	2892
	32	12.5	2	783	1566
	33	12.5	2	784	1568
	34	12.5	2	711	1422
	35	12.5	2	730	1460

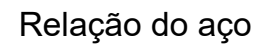
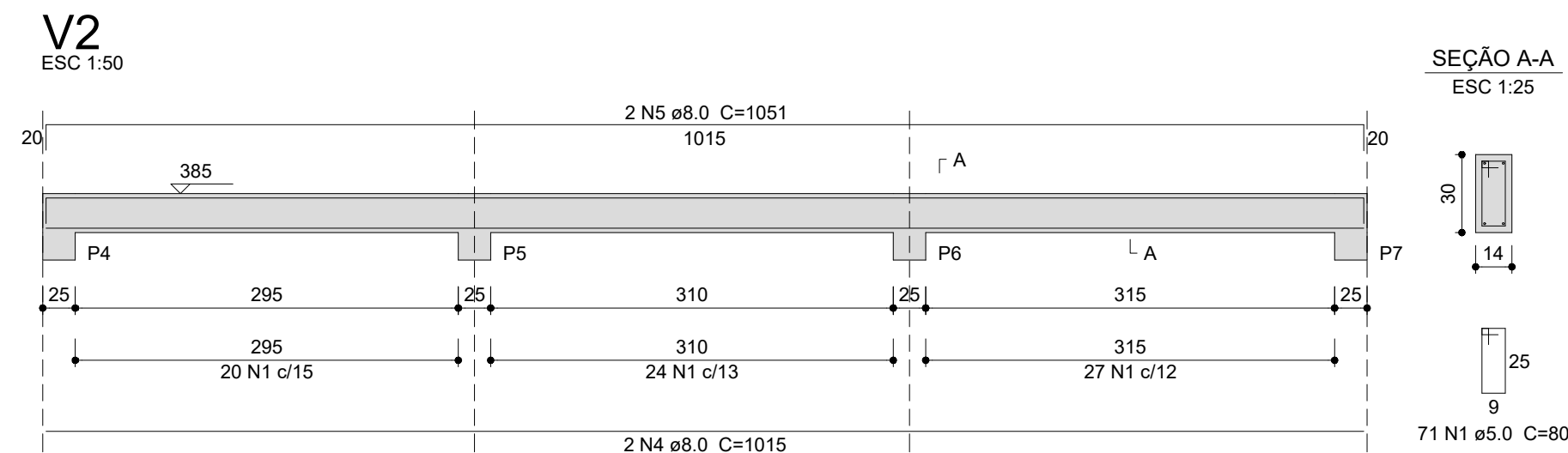
RESUMO DO AÇO

AÇO	DIAM (mm)	C.TOTAL (m)	PESO + 10% (kg)
CA50	8.0	84.5	36.7
	10.0	285	193.3
	12.5	89.1	94.4
CA60	5.0	639.3	108.4
PESO TOTAL (kg)			
CA50	324.3		
CA60	108.4		

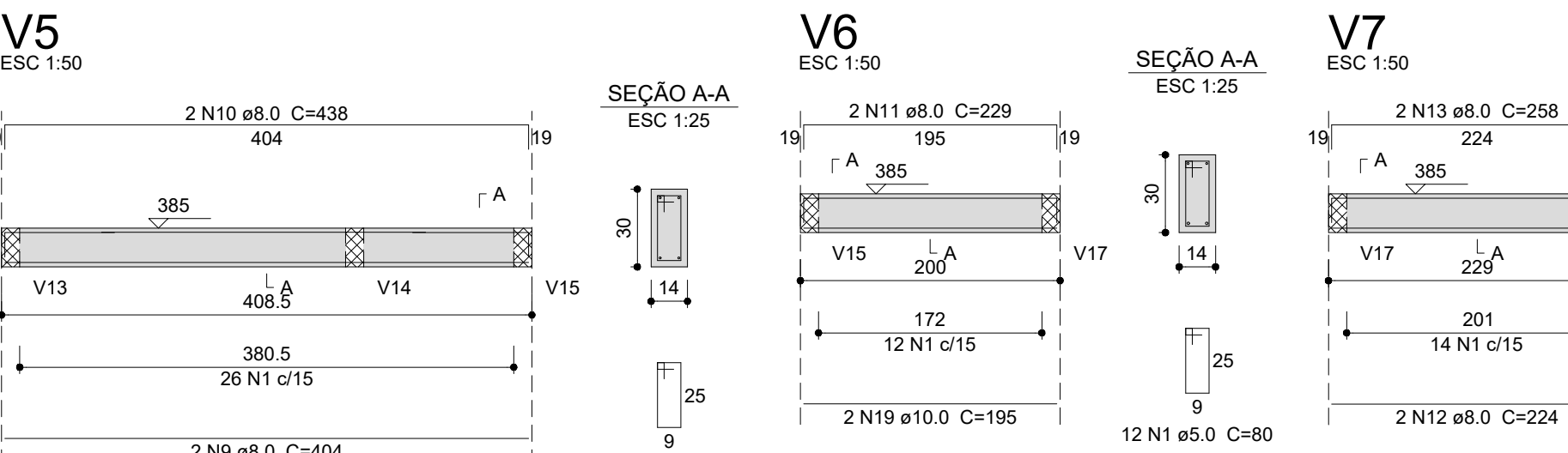
Volume de concreto (C-25) = 4.51 m³  
Área de forma = 64.46 m²



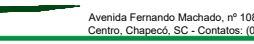
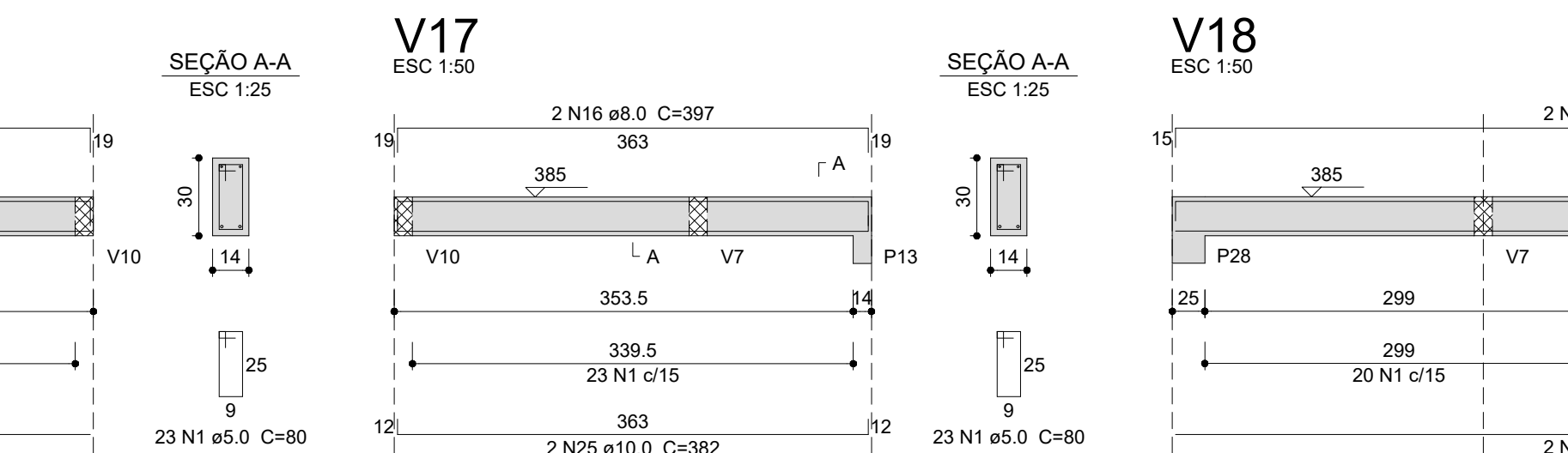
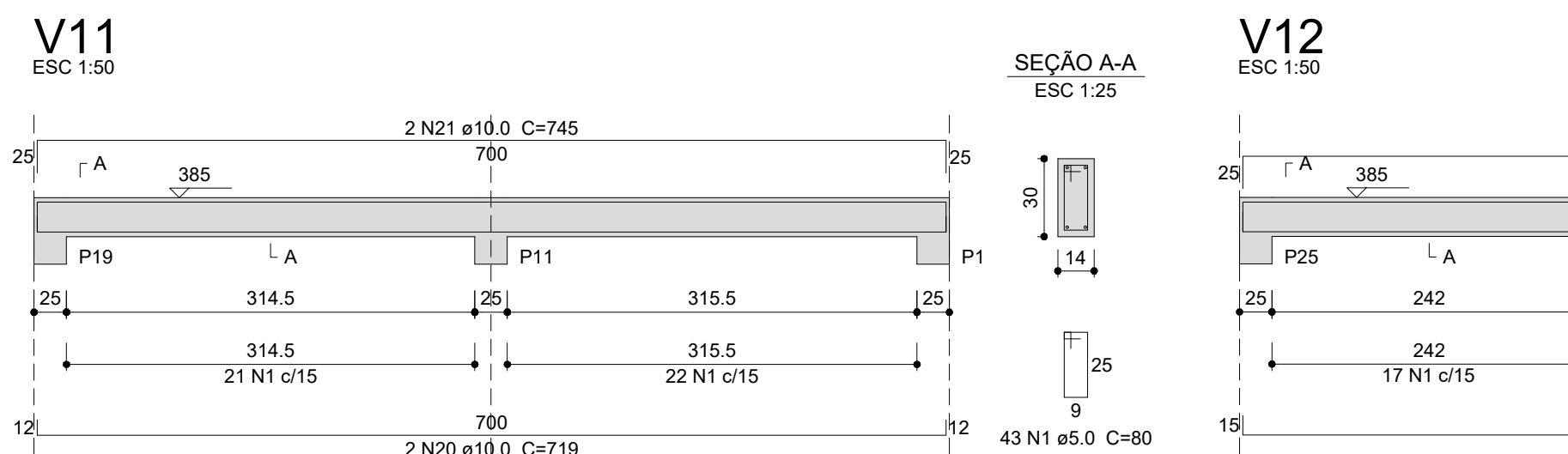
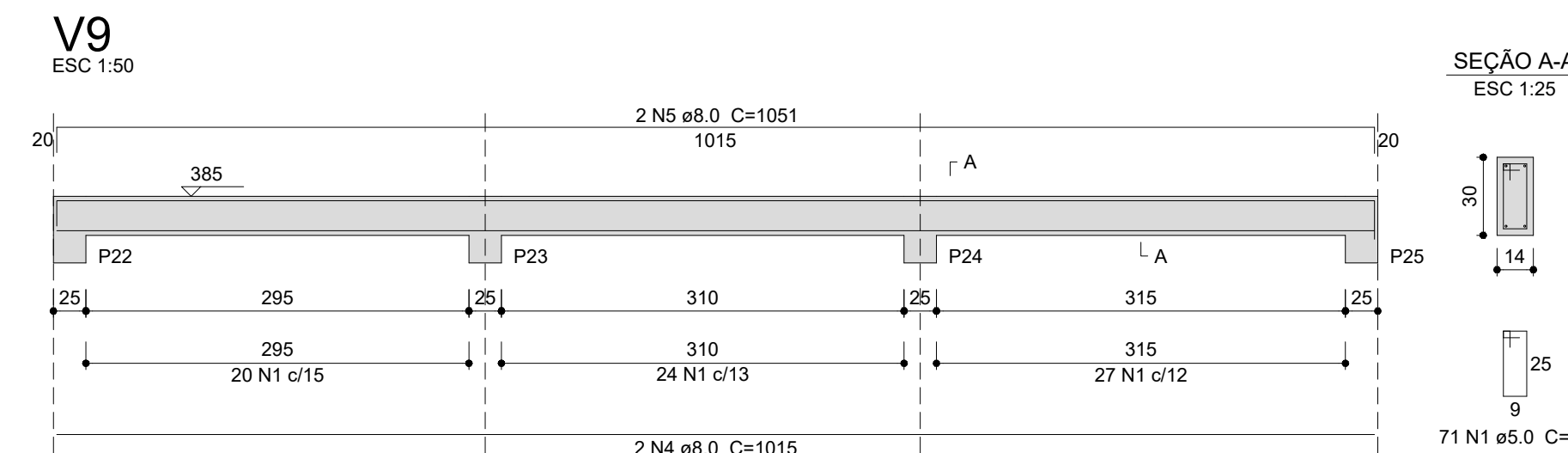


Resumo do aço

Volume de concreto (C-25) = 4.73 m<sup>3</sup>  
Área de forma = 83.39 m<sup>2</sup>



Volume de concreto (C-25) = 4.73 m<sup>3</sup>  
Área de forma = 83.39 m<sup>2</sup>



edu.hr

ESCALA:  
1:25; 1:50

TAMANHO FOLHA:  
420 x 841

Nº PRANCHA:

EST 06 / 06



SECRETARIA DE OBRAS			
SECRETARIA DE OBRAS	ENC. CIV. RODRIGO EMER	CREASTE 109026	
SECRETARIA DE PROJETOS	ENC. CIV. FABIO CORREA GASPARETTO	CREASTE 109027	
FISCALIZACAO DE OBRAS			
CHAVEIROCS	ENC. CIV. FABIO ALBA XEZARO	CREASTE 103121	
	ENC. ELITR. ELEC. CARLOS ROBERTO	CREASTE 113501	
CERRO LARGOS	ENC. CIV. PAULO ROBERTO HENDGES	CREASTE 113502	
RECORRIDOS	ENC. CIV. CARLOS ROQUE SCHMIDT	CREASTE 127898	
LAJERANERAS DE SOLARES	ENC. CIV. JULIANA NAKAMOTO	CREASTE 127899	
REALIZACAO	ENC. CIV. FABIO ONEITA	CREASTE 127900	
	ENC. CIV. FABRICIO BALESTRIN	CREASTE 127901	
DIRETORIA DE PLANEJ. - SED.			
ARO URU ADRIANA FREITAS MOTTO	CAUBRI 4411256		
ARO URU WELLINGTON	CAUBRI 4411258		
ARO URU	CAUBRI 4411259		
ENC. ELITR. SILVIO ANTONIO TESTONI	CREASTE 113503		
ENC. ELITR. VICTOR CARLOS DA SILVA	CREASTE 113504		
ENC. SANTO ADRIANI TACIANI	CREASTE 113505		
ENC. DANIEL ESPINO	CREASTE 113506		
TEC. MEC. GIOVANI FAVARO	CREASTE 109327-0		
TEC. ELITR. ELEC. GUSTO ONATO	CREASTE 113581-4		
T. L. LEONARDO PEREIRA			



---

*Emitido em 06/01/2022*

**Projeto Nº DOC (27) PROJETO EST - 6 PRANCHAS/2022 - DGCT (10.55.01.01)**  
**(Nº do Documento: 3)**

**(Nº do Protocolo: NÃO PROTOCOLADO)**

*(Assinado digitalmente em 20/01/2022 15:16 )*  
**FABIO CORREA GASPARETTO**  
*SECRETARIO - TITULAR*  
*SEO (10.55)*  
*Matrícula: 2015260*

Para verificar a autenticidade deste documento entre em <https://sipac.uffs.edu.br/documentos/> informando seu número: **3**, ano: **2022**, tipo: **Projeto**, data de emissão: **20/01/2022** e o código de verificação: **77af739af1**